

**PROPRIETARY NOTE**

THIS SPECIFICATION IS THE PROPERTY OF BOE HF AND SHALL NOT BE REPRODUCED OR COPIED WITHOUT THE WRITTEN PERMISSION OF BOE HF AND MUST BE RETURNED TO BOE HF UPON ITS REQUEST

BOE

SPEC. NUMBER

S801-5126

PRODUCT GROUP

TFT- LCD

REV.

0

ISSUE DATE

2020.08.31

PAGE

1 OF 28

GT080X0M-N12-1QP0-Product Specification Rev.0

SUPPLIER

FG-Code

GT080X0M-N12-1QP0

(模组厂FG-CODE **2021080BXG030001-01G**)

ITEM BUYER SIGNATURE DATE

ITEM SUPPLIER SIGNATURE DATE

Prepared _____

Reviewed _____

Approved _____

**BOE****PRODUCT GROUP**

REV

ISSUE DATE

TFT LCD PRODUCT

0

2020.08.31

Contents

No.	Items	Page
1.0	General Description	4
2.0	Absolute Maximum ratings	6
3.0	Electrical specifications.	7
4.0	Interface Connection	9
5.0	Signal Timing Specifications	11
6.0	Signal Timing Waveforms Of Interface Signal	14
7.0	Power Sequence	16
8.0	Optical specifications.	17
9.0	Mechanical Outline Dimension	21
10.0	Reliability Test	23
11.0	Precautions	24
12.0	Label	28

SPEC. NUMBER

S801-5126

SPEC TITLE

GT080X0M-N12-1QP0 Product Specification

PAGE

3 OF 28

BOE**PRODUCT GROUP**

REV

ISSUE DATE

TFT LCD PRODUCT

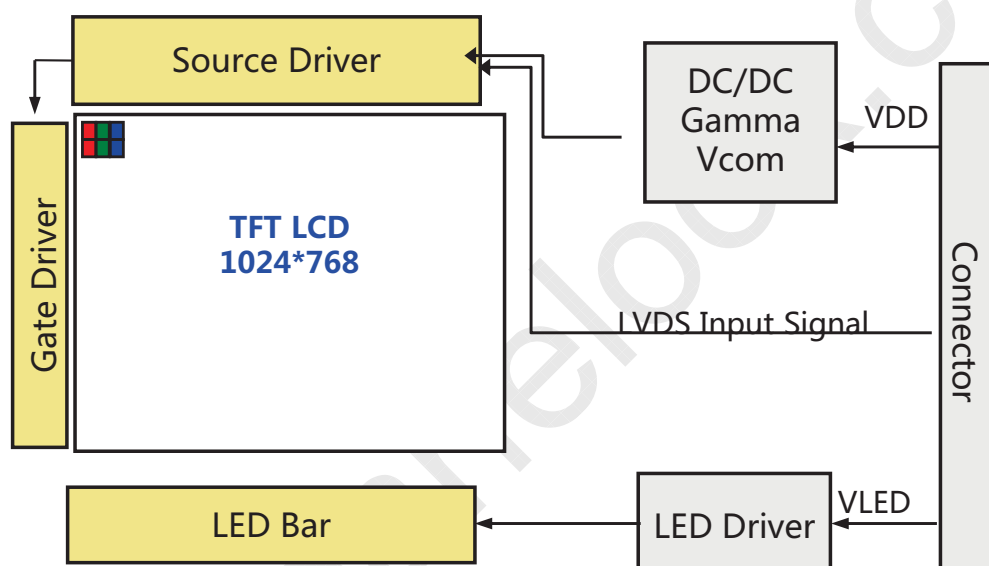
0

2020.08.31

1.0 GENERAL DESCRIPTION

1.1 Introduction

2021080BXG030001-01G is a color active matrix TFT LCD module using amorphous silicon TFT's (Thin Film Transistors) as an active switching devices. This module has a 8 inch diagonally measured active area with XGA resolutions (1024 horizontal by 768 vertical pixel array). Each pixel is divided into RED, GREEN, BLUE dots which are arranged in vertical stripe and this module can display 16.2 M colors.



1.2 Features

- LED back-light
- LVDS interface
- RoHS Compliant

1.3 Application

- Industrial control

SPEC. NUMBER

S801-5126

SPEC TITLE

GT080X0M-N12-1QP0 Product Specification

PAGE

4 OF 28

BOE**PRODUCT GROUP**

REV

ISSUE DATE

TFT LCD PRODUCT

0

2020.08.31

1.4 General Specification

< Table 1. General Specifications >

Parameter	ITEMS	Unit	Remarks
Active area	162.05 (H) × 121.5(V)	mm	
Number of pixels	1024(H) × 768(V)	Pixels	
Pixel pitch	0.052(H) × RGB × 0.158(V)	mm	
Pixel arrangement	RGB Vertical stripe	-	
Display colors	16.2M	Colors	
Display mode	Normally White	-	
Dimensional outline	183.0 (H) × 141.0(V) × 5.6(D) typ.	Mm	
Surface treatment	Anti-Glare	-	
Back-light	Edge side, 1-LED Lighting Bar Type	-	30*LED

SPEC. NUMBER
S801-5126SPEC TITLE
GT080X0M-N12-1QP0 Product SpecificationPAGE
5 OF 28

BOE**PRODUCT GROUP**

REV

ISSUE DATE

TFT LCD PRODUCT

0

2020.08.31

2.0 ABSOLUTE MAXIMUM RATINGS

The followings are maximum values which, if exceed, may cause faulty operation or damage to the unit. The operational and non-operational maximum voltage and current values are listed in Table 2.

< Table 2. Environment Absolute Maximum Ratings> [Ta =25±2 °C]

Parameter	Symbol	Min.	Max.	Unit	Remarks
Back-light Power Supply Voltage	HV _{DDOUT}	-0.3	24	V	Ta = 25 °C Note 1&2
Back-light LED Reverse Voltage	V _R	-	12.8	V	
Operating Temperature	T _{OP}	-20	70	°C	Environment Temperature
Storage Temperature	T _{ST}	-30	80	°C	

Note:

1. These range above is maximum value not the actual operating temperature . Actual Operating temperature is no more than 40°C and temperature refers to the LCM surface temperature ;
- 2.BOE is not responsible for product problems beyond the use conditions.
- 3.When the ambient temperature is T °C, the surface temperature of Panel can not exceed (T+15)°C.

SPEC. NUMBER
S801-5126

SPEC TITLE
GT080X0M-N12-1QP0 Product Specification

PAGE
6 OF 28

BOE**PRODUCT GROUP**

REV

ISSUE DATE

TFT LCD PRODUCT

0

2020.08.31

3.0 ELECTRICAL SPECIFICATIONS**3.1 TFT LCD Module**

< Table 3. LCD Module Electrical Specifications >

[Ta =25±2 °C]

Parameter	Symbol	Values			Unit	Notes
		Min	Typ	Max		
Power Supply Input Voltage	V _{DD}	3.0	3.3	3.6	V	Note 1
Power Supply Current	I _{DD}	-	22.5	-	mA	
Analog Supply Voltage	AVDD	11.42	11.62	11.82	V	Note 1
Analog Current	I _{AVDD}	-	30.5	-	mA	
Gate On Voltage	V _{GH}	22	23	21	V	
Gate on Current	I _{VGH}	-	0.5	-	mA	
Gate Off Voltage	V _{GL}	-7.98	-7.78	-7.58	V	
Gate off Current	I _{VGL}	-	4.21	-	mA	Note 2
Common Voltage	V _{com}	4.58	4.78	4.98	V	

Notes :

1. The supply voltage is measured and specified at the interface connector of LCM.
The current draw and power consumption specified is for 3.3V at 25 °C
Max value at Black Pattern
2. TYP VCOM is only reference value. It must be optimized according to each LCM. Be sure to use VR and OP buffer on VCOM output. Please adjust VCOM to make the flicker level be minimum for getting excellent image.

SPEC. NUMBER
S801-5126

SPEC TITLE
GT080X0M-N12-1QP0 Product Specification

PAGE
7 OF 28

BOE**PRODUCT GROUP**

REV

ISSUE DATE

TFT LCD PRODUCT

0

2020.08.31

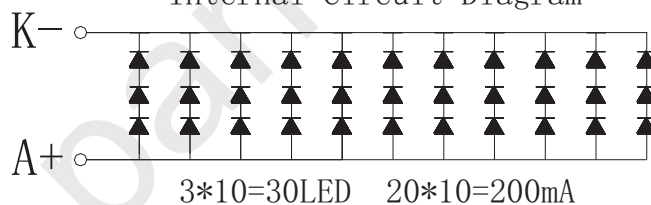
3.2 Back-light Unit

< Table 4. LED Driving guideline specifications >

Ta=25+/-2°C

Parameter		Min.	Typ.	Max.	Unit	Remarks
Power supply voltage for Back light	V _{LED}	8.1	9.0	9.6	V	
Power supply Current for Back light	I _{LED}	-	200	-	mA	
Power supply for Back light	P _{LED}	-	1.8	-	W	Note 1

Internal Circuit Diagram

Notes : 1. Calculator Value for reference $I_{LED} \times V_{LED} = P_{LED}$

2. The LED Life-time define as the estimated time to 50% degradation of initial luminous under the condition of the ambient temperature of 25°C.

SPEC. NUMBER

S801-5126

SPEC TITLE

GT080X0M-N12-1QP0 Product Specification

PAGE

8 OF 28

BOE**PRODUCT GROUP**

REV

ISSUE DATE

TFT LCD PRODUCT

0

2020.08.31

4.0 INTERFACE CONNECTION.**4.1 Electrical Interface Connection**

FPC connector:FPC40-T1T1-2021-A or equal

<Table 5. Pin Assignments for the Interface Connector>

Terminal	Symbol	Functions
1	VCOM	Common voltage
2	VDD(3.3V)	Power voltage for digital circuit
3	VDD(3.3V)	Power voltage for digital circuit
4	NC	No Connection
5	RESET(3.3V)	Global reset pin.Keep VDD during operation.Normally pull high.
6	STBYB	Standby mode control.Normally pull High.
7	GND	Ground
8	RXIN0-	-LVDS differential data input
9	RXIN0+	+LVDS differential data input
10	GND	Ground
11	RXIN1-	-LVDS differential data input
12	RXIN1+	+LVDS differential data input
13	GND	Ground
14	RXIN2-	-LVDS differential data input
15	RXIN2+	+LVDS differential data input
16	GND	Ground
17	RXCLKIN-	-LVDS differential clock input
18	RXCLKIN+	+LVDS differential clock input
19	GND	Ground
20	RXIN3-	-LVDS differential data input
21	RXIN3+	+LVDS differential data input
22	GND	Ground
23	NC	No Connection
24	NC	No Connection
25	GND	Ground
26	NC	No Connection
27	DIMO	Backlight CABC controller signal output
28	HSD	6bit/8bit mode select
29	AVDD(11.62V)	Power for Analog Circuit
30	GND	Ground
31	LED-	LED Cathode
32	LED-	LED Cathode
33	L/R	Horizontal inversion
34	U/D	Vertical inversion
35	VGL(-7.78)	Negative power for TFT
36	CABCEN1	CABC H/W enable pin.Normally pull low.
37	CABCEN0	CABC H/W enable pin.Normally pull low.
38	VGH(23V)	Positive power for TFT
39	LED+	LED Anode
40	LED+	LED Anode

SPEC. NUMBER

S801-5126

SPEC TITLE

GT080X0M-N12-1QP0 Product Specification

PAGE

9 OF 28

BOE**PRODUCT GROUP**

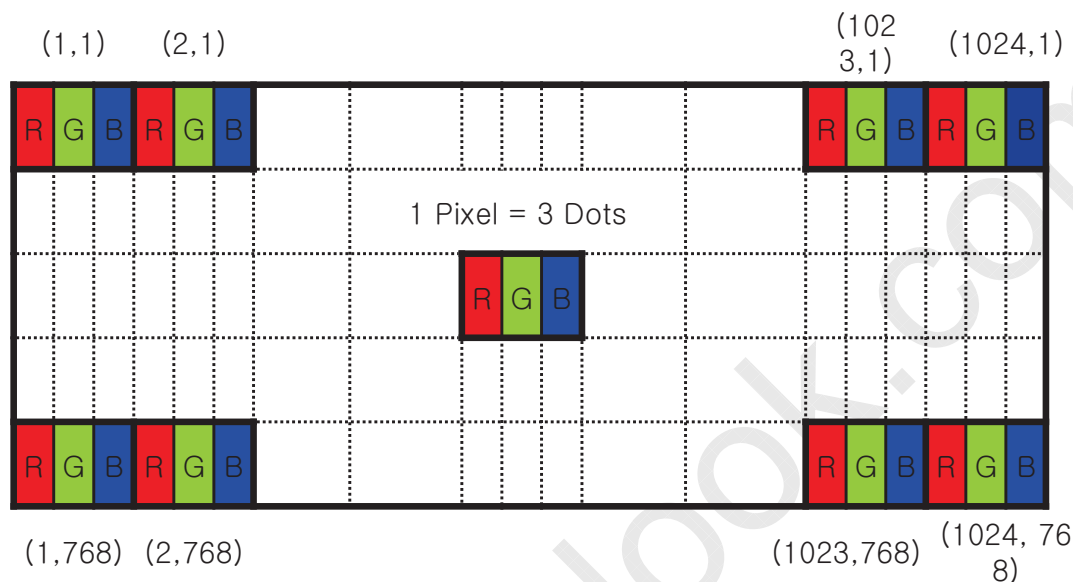
REV

ISSUE DATE

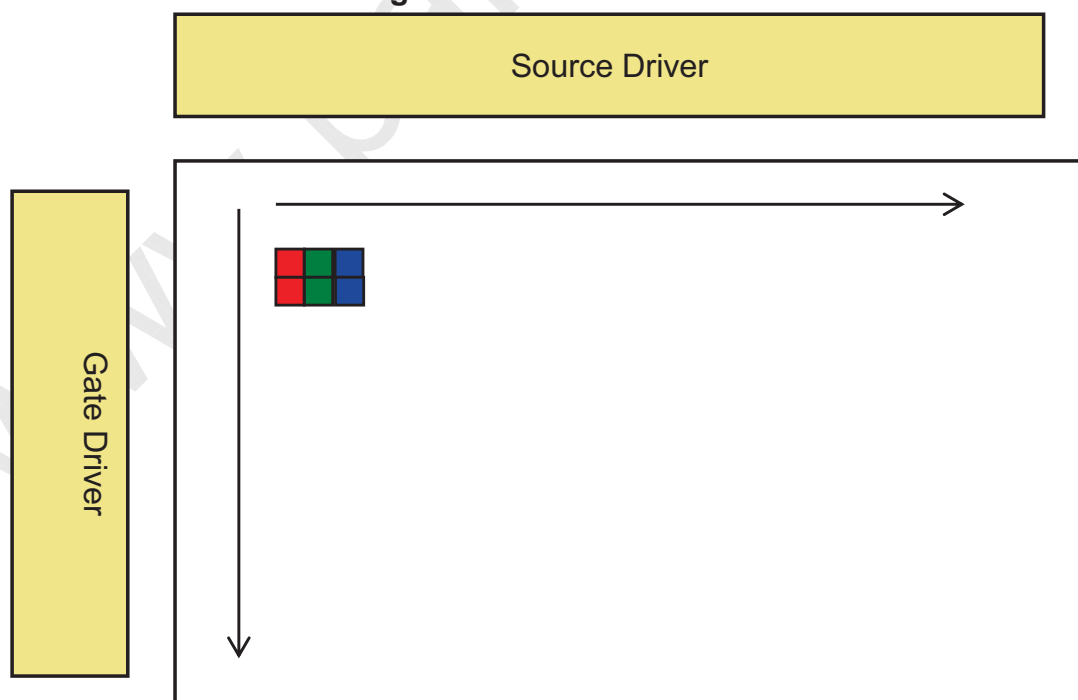
TFT LCD PRODUCT

0

2020.08.31

4.2 Data Input Format**Figure 5. Pixel Format**

Display Position of Input Data (V-H)

Figure 6. Scan directionSPEC. NUMBER
S801-5126SPEC TITLE
GT080X0M-N12-1QP0 Product SpecificationPAGE
10 OF 28

BOE

PRODUCT GROUP

REV

ISSUE DATE

TFT LCD PRODUCT

0

2020.08.31

5.0 SIGNAL TIMING SPECIFICATION

5.1 The LCM input timing table

DE Mode

Parameter	Symbol	Spec.			Unit
		Min.	Typ.	Max.	
DCLK frequency	fclk	52	65	71	MHz
Horizontal display area	thd	1024			DCLK
HSD period	th	1114	1344	1400	DCLK
HSD blanking	thb+ thfp	90	320	376	DCLK
Vertical display area	tvd	768			T _H
VSD period	tvbp	778	806	845	T _H
VSD blanking	tvbp+ tvfp	10	38	77	T _H

HV Mode

• Horizontal timing

Parameter	Symbol	Spec.			Unit
		Min.	Typ.	Max.	
DCLK frequency	fclk	57	65	70.5	MHz
Horizontal display area	thd	1024			DCLK
HSD period	th	1200	1344	1400	DCLK
HSD pulse width	thpw	1	-	140	DCLK
HSD back porch	thbp	160			DCLK
HSD front porch	thfp	16	160	216	DCLK

• Vertical timing

Parameter	Symbol	Spec.			Unit
		Min.	Typ.	Max.	
Vertical display area	tvd	768			T _H
VSD period	tv	792	806	840	T _H
VSD pulse width	tvpw	1	-	20	T _H
VSD back porch	tvbp	23			T _H
VSD front porch	tvfp	1	15	49	T _H

Note: The DCLK range at last line of V-blanking should be set in 0-H-active/2.

SPEC. NUMBER

S801-5126

SPEC TITLE

GT080X0M-N12-1QP0 Product Specification

PAGE

11 OF 28

BOE**PRODUCT GROUP**

TFT LCD PRODUCT

REV

0

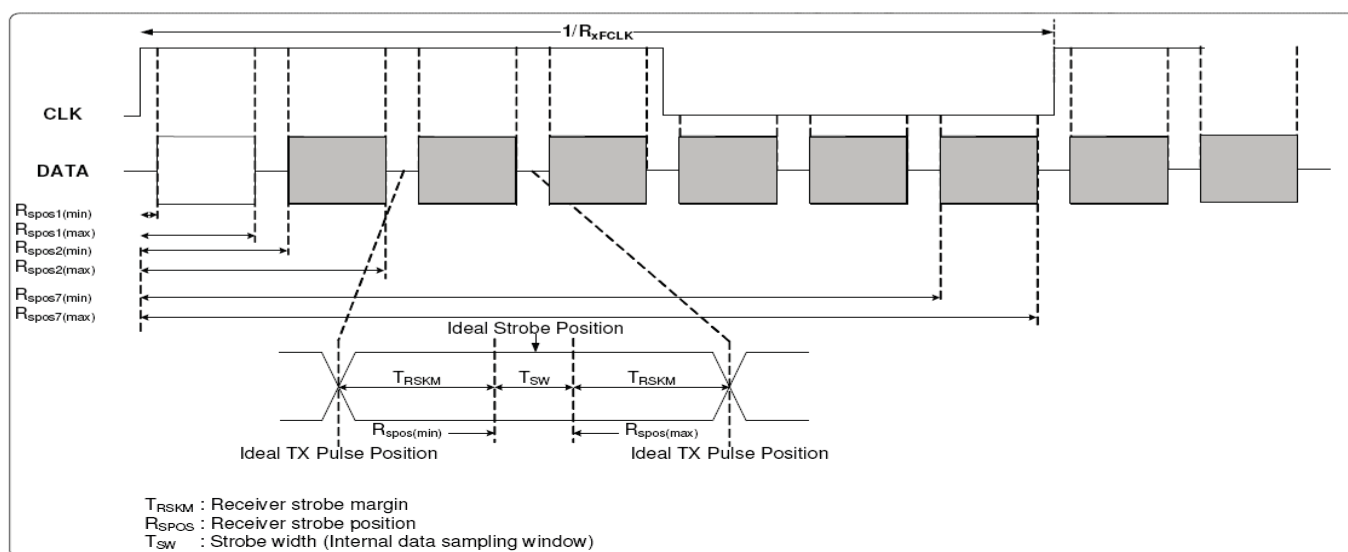
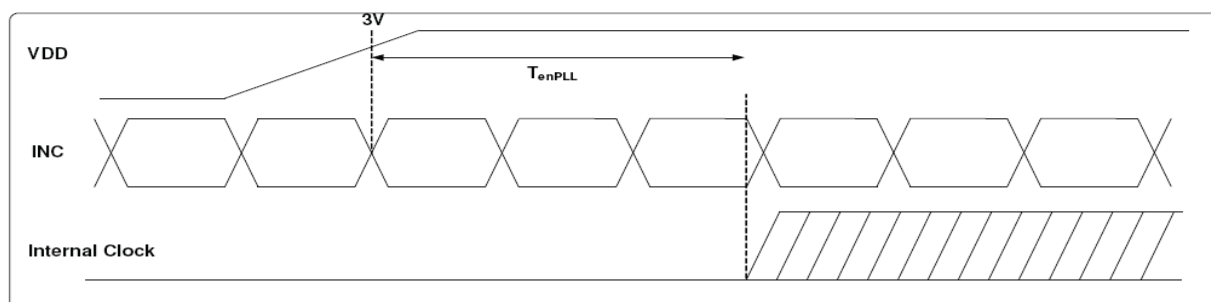
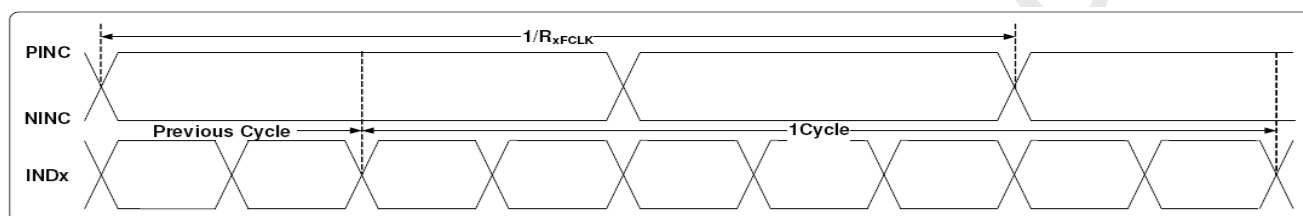
ISSUE DATE

2020.08.31

5.2 TTL Rx Interface Timing Parameter

The specification of the LVDS Rx interface timing parameter is shown in Table 4.

Parameter	Symbol	Spec.			Unit	Condition
		Min.	Typ.	Max.		
Clock frequency	RXFCLK	20	-	71	MHz	-
Input data skew margin	TRSKM	500	-	-	pS	VID =400mV RXVCM =1.2V RXFCLK =71MHz
Clock high time	TLVCH	-	4/(7* RXFCLK)	-	ns	-
Clock low time	TLVCL	-	3/(7* RXFCLK)	-	ns	-
PLL wake-up time	TemPLL	-	-	150	μs	-

**SPEC. NUMBER**
S801-5126**SPEC TITLE**
GT080X0M-N12-1QP0 Product Specification**PAGE**
12 OF 28

BOE**PRODUCT GROUP**

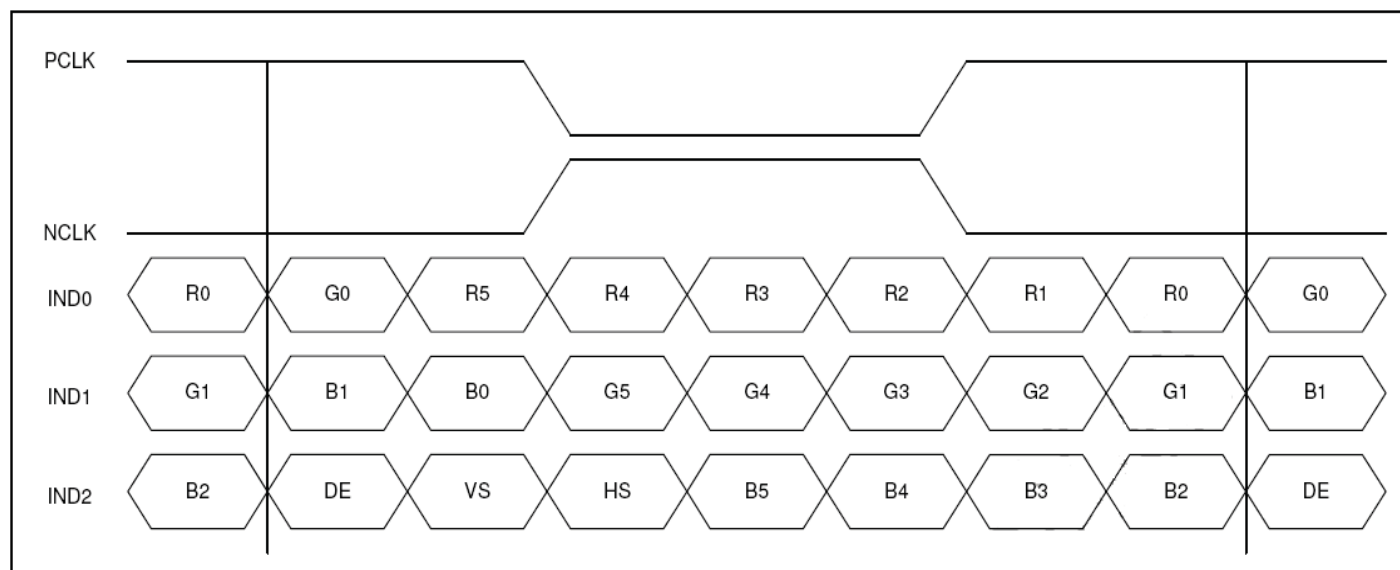
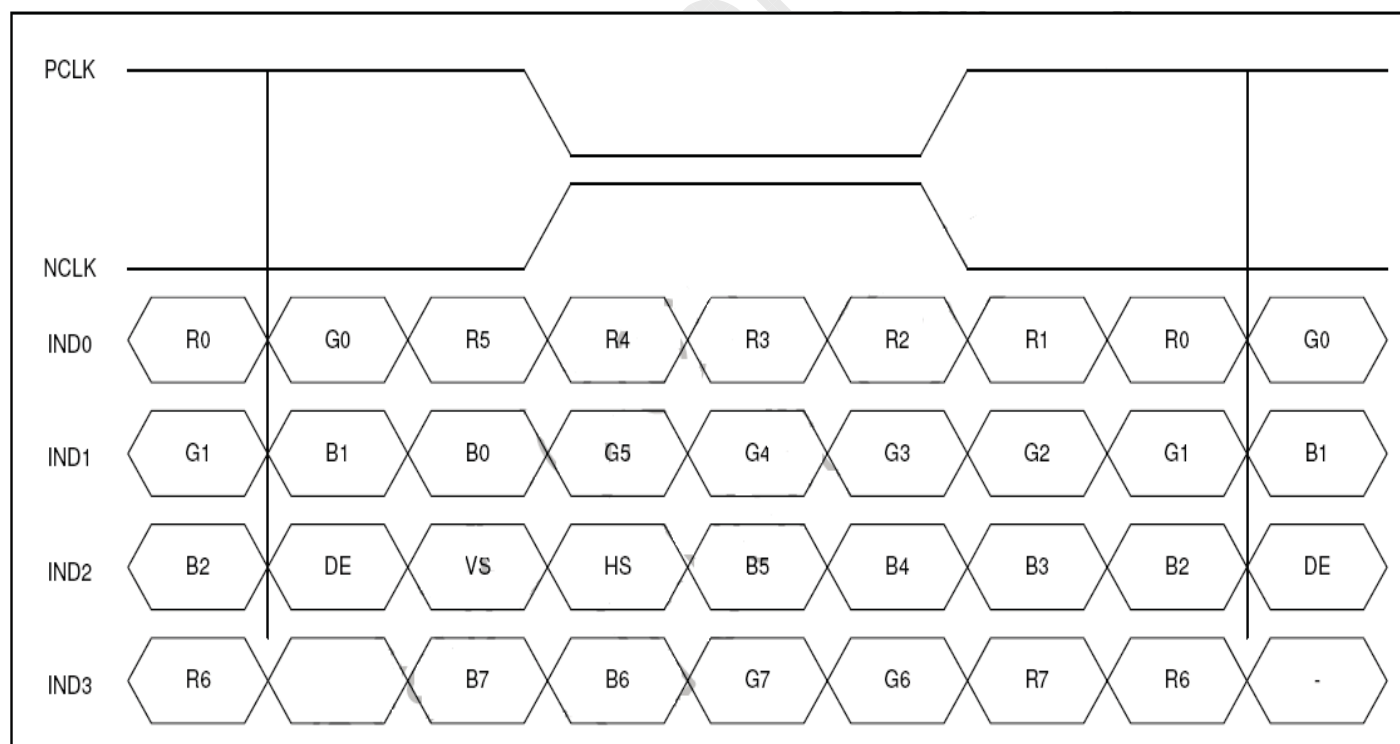
REV

ISSUE DATE

TFT LCD PRODUCT

0

2020.08.31

5.3 6-bits LVDS Input**5.4 8-bits LVDS Input**SPEC. NUMBER
S801-5126SPEC TITLE
GT080X0M-N12-1QP0 Product SpecificationPAGE
13 OF 28

BOE**PRODUCT GROUP**

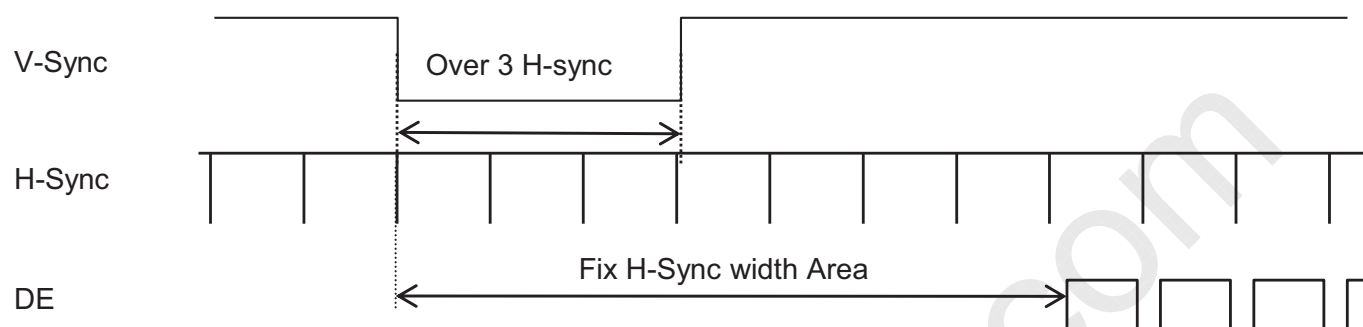
REV

ISSUE DATE

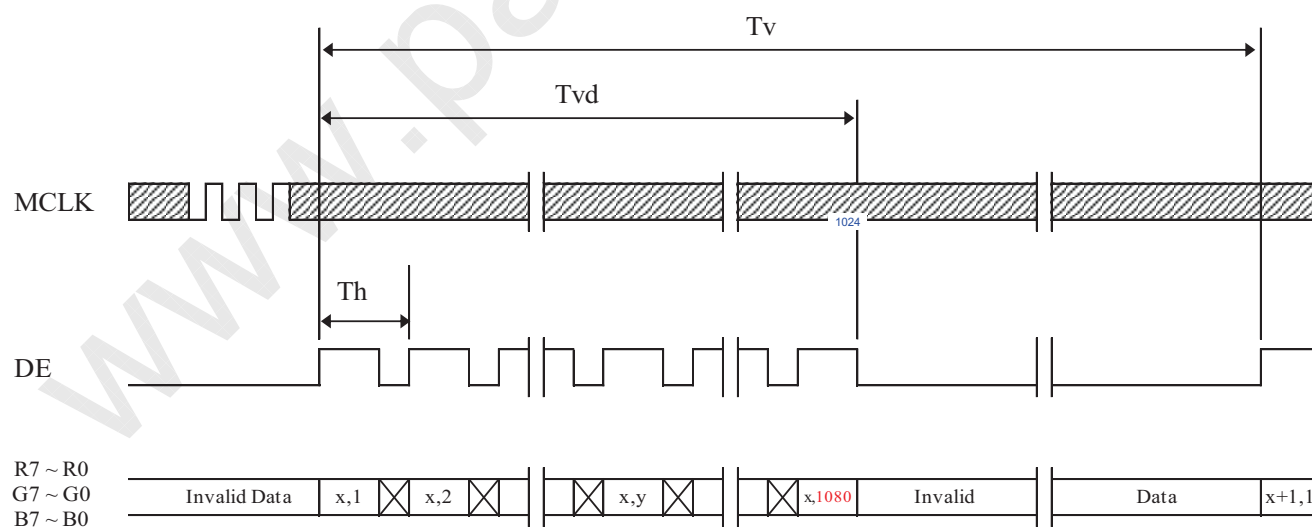
TFT LCD PRODUCT

0

2020.08.31

6. SIGNAL TIMING WAVEFORMS OF INTERFACE SIGNAL**6.1 Sync Timing Waveforms**

- 1) Need over 3 H-sync during V-Sync Low.
- 2) Fix H-Sync width from V-Sync falling edge to first rising edge.

6.2 Vertical Timing Waveforms

SPEC. NUMBER
S801-5126

SPEC TITLE
GT080X0M-N12-1QP0 Product Specification

PAGE
14 OF 28

BOE

PRODUCT GROUP

TFT LCD PRODUCT

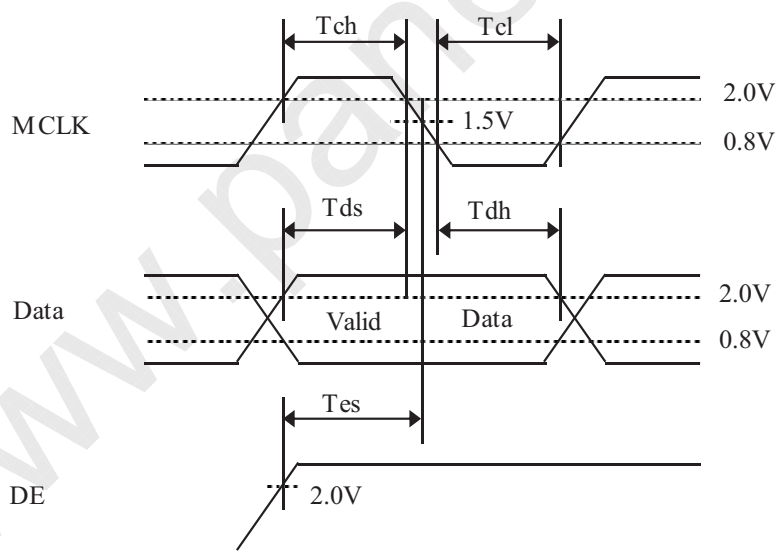
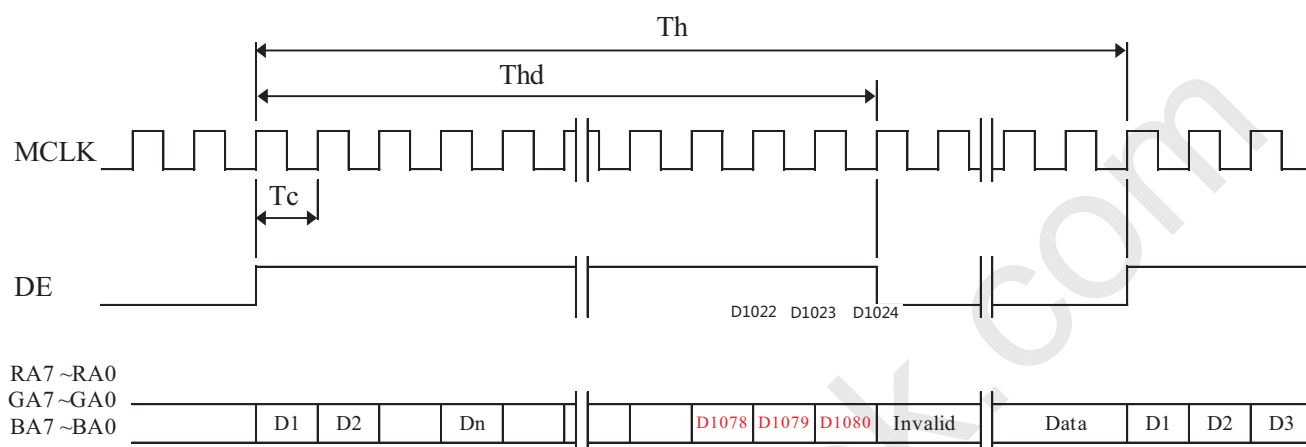
REV

0

ISSUE DATE

2020.08.31

6.3 Horizontal Timing Waveforms



SPEC. NUMBER
S801-5126

SPEC TITLE
GT080X0M-N12-1QP0 Product Specification

PAGE
15 OF 28

BOE**PRODUCT GROUP**

REV

ISSUE DATE

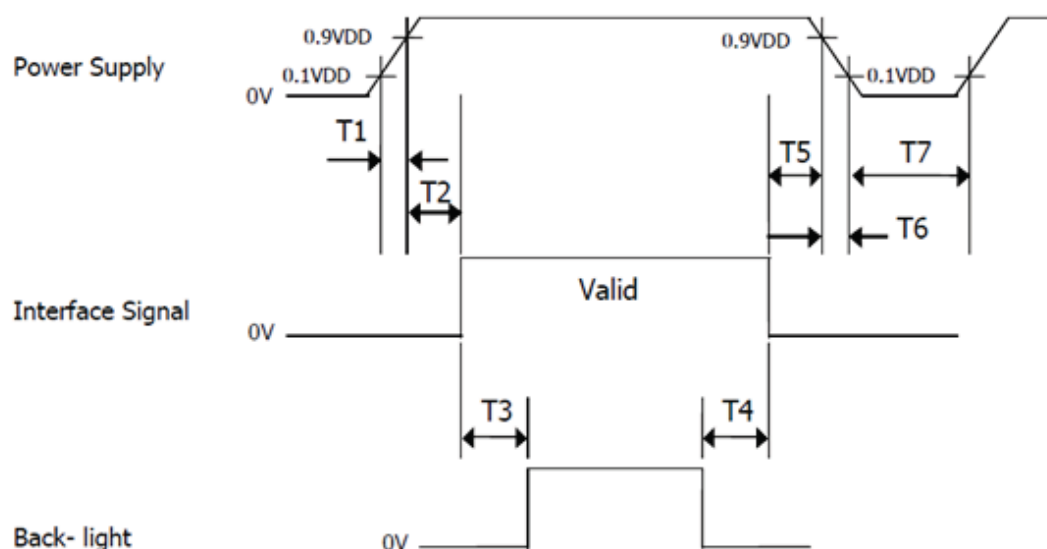
TFT LCD PRODUCT

0

2020.08.31

7.0 POWER SEQUENCE

To prevent a latch-up or DC operation of the LCD module, the power on/off sequence shall be as shown in below.



Parameter	Values			Units
	Min	Typ	Max	
T1	0	-	10	ms
T2	0	-	50	ms
T3	200	-	-	ms
T4	500	-	-	ms
T5	0	-	50	ms
T6	0	-	10	ms
T7	500	-	-	ms

SPEC. NUMBER
S801-5126

SPEC TITLE
GT080X0M-N12-1QP0 Product Specification

PAGE
16 OF 28

BOE**PRODUCT GROUP**

REV

ISSUE DATE

TFT LCD PRODUCT

0

2020.08.31

8.0 OPTICAL SPECIFICATION**8.1 Overview**

The test of view angle range shall be measured in a dark room (ambient luminance $\leq 1\text{lux}$ and temperature = $25\pm 2^\circ\text{C}$) with the equipment of Luminance meter system (Goniometer system and TOPCON CS2000/CA310) and test unit shall be located at an approximate distance 50cm from the LCD surface at a viewing angle of θ and Φ equal to 0° . We refer to $\theta\Phi=0$ ($=\theta_3$) as the 3 o'clock direction (the "right"), $\theta\Phi=90$ ($=\theta_{12}$) as the 12 o'clock direction ("upward"), $\theta\Phi=180$ ($=\theta_9$) as the 9 o'clock direction ("left") and $\theta\Phi=270$ ($=\theta_6$) as the 6 o'clock direction ("bottom"). While scanning θ and/or Φ , the center of the measuring spot on the Display surface shall stay fixed. The luminance, color and uniformity (etc) should be tested by CS2000/CA310. The backlight should be operating for 10 minutes prior to measurement. VDD shall be $3.3 \pm 0.3\text{V}$ at 25°C .

<Table 5. Optical Specifications>

Parameter		Symbol	Condition	Min.	Typ.	Max.	Unit	Remark
Viewing Angle range	Horizontal	Θ_3	CR > 10	-	75	-	Deg.	Note 1
		Θ_9		-	75	-	Deg.	
	Vertical	Θ_{12}		-	75	-	Deg.	
		Θ_6		-	70	-	Deg.	
Luminance Contrast ratio		CR	$\Theta = 0^\circ$		500	-		Note 2
Luminance of White	Center	Y_w	$\Theta = 0^\circ$	350	400	-	cd/m ²	Note 3
Color Gamut	NTSC	CIE1931	$\Theta = 0^\circ$	-	50	-	%	Note 4
Reproduction of color	White	W_x	$\Theta = 0^\circ$	Typ -0.03	0.314	Typ +0.03		
		W_y			0.333			
Response Time		Tr+Td	Ta= 25° C $\Theta = 0^\circ$	-	20	40	ms	Note 5

SPEC. NUMBER

S801-5126

SPEC TITLE

GT080X0M-N12-1QP0 Product Specification

PAGE

17 OF 28

BOE	PRODUCT GROUP	REV	ISSUE DATE
	TFT LCD PRODUCT	0	2020.08.31

Notes : 1. Viewing angle is the angle at which the contrast ratio is greater than 10. The viewing angles are determined for the horizontal or 3, 9 o'clock direction and the vertical or 6, 12 o'clock direction with respect to the optical axis which is normal to the LCD surface .

2. Contrast measurements shall be made at viewing angle of $\Theta = 0$ and at the center of the LCD surface. Luminance shall be measured with all pixels in the view field set first to white, then to the dark (black) state . (see FIGURE 1) Luminance Contrast Ratio (CR) is defined mathematically.

$$CR = \frac{\text{Luminance when displaying a white raster}}{\text{Luminance when displaying a black raster}}$$

3. Luminance of white is defined as luminance values of center of the LCD surface. Luminance shall be measured with all pixels in the view field set first to white. This measurement shall be taken at the locations shown in FIGURE 1 for a total of the measurements per display. The luminance is measured by CS2000/CA310 when the LED current is set at 200mA.
4. The color chromaticity coordinates specified in Table 5. shall be calculated from the spectral data measured with all pixels first in red, green, blue and white. Measurements shall be made at the center of the panel.
5. The electro-optical response time measurements shall be made as FIGURE 2 . The times needed for the, luminance to change from 10% to 90% is T_r , and 90% to 10% is T_f .

SPEC. NUMBER S801-5126	SPEC TITLE GT080X0M-N12-1QP0 Product Specification	PAGE 18 OF 28
---------------------------	-------------------------------------------------------	------------------

BOE**PRODUCT GROUP**

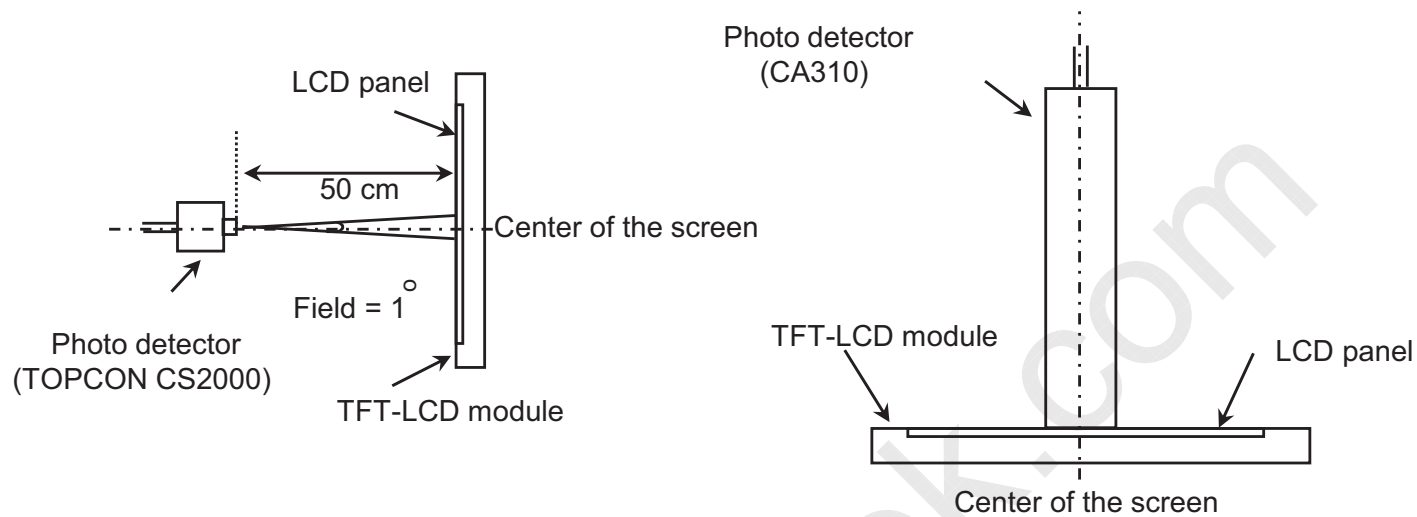
REV

ISSUE DATE

TFT LCD PRODUCT

0

2020.08.31

8.2 Optical measurements**Figure 1. Measurement Set Up**

View angel range, uniformity, etc. measurement setup

Flicker, measurement setup

SPEC. NUMBER

S801-5126

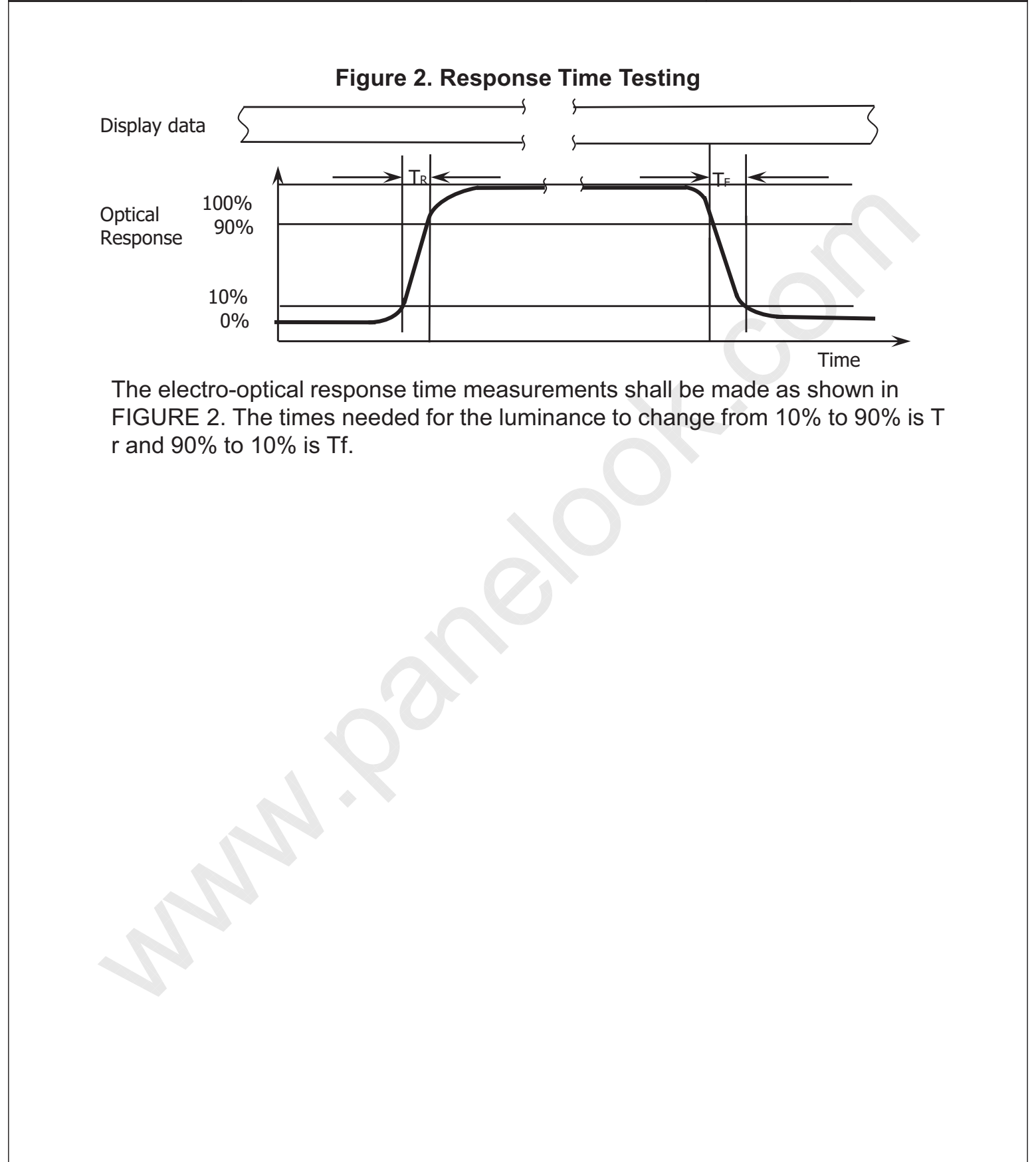
SPEC TITLE

GT080X0M-N12-1QP0 Product Specification

PAGE

19 OF 28

BOE	PRODUCT GROUP	REV	ISSUE DATE
	TFT LCD PRODUCT	0	2020.08.31



SPEC. NUMBER S801-5126	SPEC TITLE GT080X0M-N12-1QP0 Product Specification	PAGE 20 OF 28
---------------------------	-------------------------------------------------------	------------------

BOE

PRODUCT GROUP

TFT LCD PRODUCT

REV

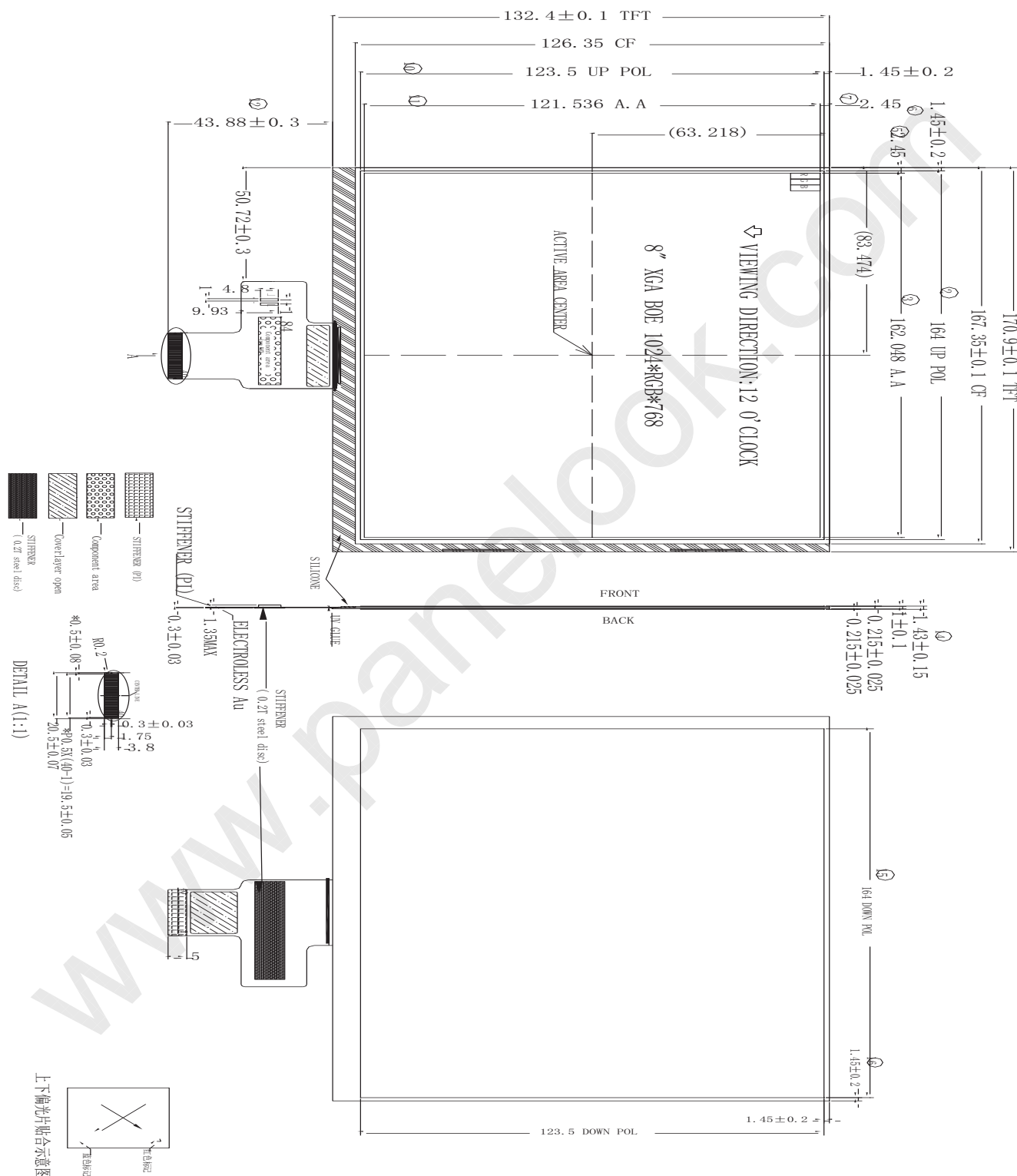
0

ISSUE DATE

2020.08.31

9.0 MECHANICAL OUTLINE DIMENSION

Figure 1. TFT-LCD Module Outline Dimension (Front View)

SPEC. NUMBER
S801-5126SPEC TITLE
GT080X0M-N12-1QP0 Product SpecificationPAGE
21 OF 28

SPEC. NUMBER	SPEC TITLE	PAGE
S801-5126	GT080X0M-N12-1QP0 Product Specification	22 OF 28

BOE**PRODUCT GROUP**

REV

ISSUE DATE

TFT LCD PRODUCT

0

2020.08.31

10.0 RELIABILITY TEST

The Reliability test items and its conditions are shown in below.

<Table 9. Reliability test>

No	Test Items	Conditions	Remark
1	High temperature storage test	Ta = 80°C, 120 hrs	
2	Low temperature storage test	Ta = -30 °C, 120 hrs	
3	High temperature operation test	Ta = 70°C, 120 hrs	
4	Low temperature operation test	Ta = -20 °C, 120 hrs	
5	High temperature & high humidity operation test	Ta = 60 °C, 90%RH, 120 hrs	
6	Thermal shock	Ta = -30 °C ↔ 80°C (0.5 hr), 20 cycle	Non-operation
7	ESD test	Air Voltage: ±8KV Contact Voltage: ±4KV R: 330Ω C: 5point/panel	
8	P-VIB	0-200Hz, X 1hr, Y 1hr, Z 1hr	
9	Drop	Height:80cm 1 corner,3edges,6surfaces	

Note : After the reliability test, the product only guarantee function normally without any fatal defect (non-display, line defect, abnormal display etc). All the cosmetic specification is judged before the reliability test.

SPEC. NUMBER

S801-5126

SPEC TITLE

GT080X0M-N12-1QP0 Product Specification

PAGE

23 OF 28

BOE	PRODUCT GROUP	REV	ISSUE DATE
	TFT LCD PRODUCT	0	2020.08.31

11.0 Precautions

Please pay attention to the followings when you use this TFT LCD Panel.

11.1 Mounting Precautions

- (1) Use fingerstalls with soft gloves in order to keep display clean during the incoming inspection and assembly process.
- (2) You must mount a module using specified mounting holes (Details refer to the drawings).
- (3) Please make sure to avoid external forces applied to the Source PCB or FPC and D-IC during the process of handling or assembling. If not, It causes panel damage or malfunction.
- (4) Note that **LCD surface** are very fragile and could be easily damaged. Do not touch, push or rub the exposed **LCD surface** with glass, tweezers or anything harder than HB pencil lead. And please do not rub with dust clothes with chemical treatment.
- (5) Do not pull or fold the source D-IC which connect the source PCB or FPC and the panel.
Do not pull or fold the LED wire.
- (6) After removing the protective film, when the surface becomes dusty, please wipe gently with absorbent cotton or other soft materials like chamois soaks with alcohol or purified water.
Do not strong polar solvent because they cause chemical damage to the **LCD surface**
- (7) Wipe off saliva or water drops as soon as possible. Their long time contact with **LCD surface** causes deformations and color fading.
- (8) Since the LCD is made of glass, do not apply strong mechanical impact or static load onto it.
Handling with care since shock, vibration, and careless handling may seriously affect the product. If it falls from a high place or receives a strong shock, the glass may be broken.
- (9) Do not disassemble the module.
- (10) To determine the optimum mounting angle, refer to the viewing angle range in the specification for each model.
- (11) If the customer's set presses the main parts of the LCD, the LCD may show the abnormal display. But this phenomenon does not mean the malfunction of the LCD and should be pressed by the way of mutual agreement.
- (12) Do not drop water or any chemicals onto the LCD's surface.

SPEC. NUMBER	SPEC TITLE	PAGE
S801-5126	GT080X0M-N12-1QP0 Product Specification	24 OF 28

BOE	PRODUCT GROUP	REV	ISSUE DATE
	TFT LCD PRODUCT	0	2020.08.31

11.2 Operating Precautions

- (1) Be careful for condensation at sudden temperature change. Condensation makes damage to polarizer or electrical contacted parts. And after fading condensation, smear or spot will occur.
- (2) Module has high frequency circuits. Sufficient suppression to the electromagnetic interference shall be done by system manufacturers. Grounding and shielding methods may be important to minimized the interference.
- (3) The electrochemical reaction caused by DC voltage will lead to LCD degradation, so DC drive should be avoided.
- (4) The LCD modules use C-MOS LSI drivers, so customers are recommended that any unused input terminal would be connected to Vdd or Vss, do not input any signals before power is turn on, and ground you body, work/assembly area, assembly equipments to protect against static electricity.
- (5) Do not exceed the absolute maximum rating value. (supply voltage variation, input voltage variation, variation in part contents and environmental temperature, and so on) Otherwise the Module may be damaged.
- (6) Design the length of cable to connect between the connector for back-light and the converter as short as possible and the shorter cable shall be connected directly.
The longer cable between that of back-light and that of converter may cause the luminance of LED to lower and need a higher startup voltage(Vs).
- (7) Connectors are precise devices for connecting PCB and transmitting electrical signals. Operators should insert and unplug MDL in parallel when assembling MDL.
- (8) Do not connect or disconnect the cable to/ from the module at the "Power On" condition.
- (9) When the module is operating, do not lose CLK, ENAB signals. If any one these signals is lost, the LCD panel would be damaged.
- (10) Obey the supply voltage sequence. If wrong sequence is applied, the module would be damaged.
- (11) Do not re-adjust variable resistor or switch etc.

11.3 Electrostatic Discharge Control

- (1) Since a module is composed of electronic circuits, it is not strong to electrostatic discharge. Make certain that treatment persons are connected to ground through wrist band etc. And don't touch interface pin directly. Keep products as far away from static electricity as possible.
- (2) Avoid the use work clothing made of synthetic fibers. We recommend cotton clothing or other conductivity-treated fibers.

SPEC. NUMBER	SPEC TITLE	PAGE
S801-5126	GT080X0M-N12-1QP0 Product Specification	25 OF 28

BOE	PRODUCT GROUP	REV	ISSUE DATE
	TFT LCD PRODUCT	0	2020.08.31

11.4 Precautions for Extreme Outdoor Environments

Products should be protected against extreme high or low temperature, water vapor and ultraviolet radiation. Products need to avoid prolonged exposure to extreme outdoor environments.

11.5 Storage Precautions

When storing modules as spares for a long time, the following precautions are necessary.

(1) The polarizer surface should not come in contact with any other object.

It is recommended that they be stored in the container in which they were shipped.

Temperature : 5 ~ 40 °C

(2) Humidity : 35 ~ 75 %RH

(3) Period : 6 months

(4) Control of ventilation and temperature is necessary.

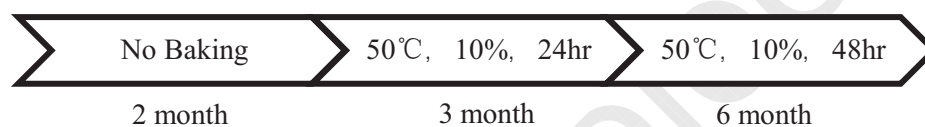
(5) Please make sure to protect the product from strong light exposure, water or moisture.

Be careful for condensation.

(6) Store in a polyethylene bag with sealed so as not to enter fresh air outside in it.

(7) Do not store the LCD near organic solvents or corrosive gasses.

(8) Please keep the Modules at a circumstance shown below Fig.



11.6 Precautions for Protection Film

(1) Remove the protective film slowly, keeping the removing direction approximate 30-degree not vertical from panel surface, If possible, under ESD control device like ion blower, and the humidity of working room should be kept over 50%RH to reduce the risk of static charge.

(2) In handling the LCD, wear non-charged material gloves. And the conducting wrist to the earth and the conducting shoes to the earth are necessary.

11.7 Appropriate Condition for Display

(1) Normal operating condition

-Temperature: 0 ~ 40 °C

-Operating Ambient Humidity : 10 ~ 90 %

-Display pattern: dynamic pattern (Real display)

-Long-term lighting products recommended regular shutdown

(2) Special operating condition

If the product will be used in extreme conditions such as high temperature, humidity, display patterns or 7*24hrs operation time etc., It is strongly recommended to contact BOE for Application engineering advice. Otherwise, its reliability and function may not be guaranteed.

(3) Black image or moving image is strongly recommended as a screen save.

SPEC. NUMBER	SPEC TITLE	PAGE
S801-5126	GT080X0M-N12-1QP0 Product Specification	26 OF 28

BOE	PRODUCT GROUP	REV	ISSUE DATE
	TFT LCD PRODUCT	0	2020.08.31

(4) Lifetime in this spec. is guaranteed only when commercial display is used according to operating usages.

(5) Please contract BOE in advance when you want to switch between portrait and landscape

(6) Please contact BOE in advance when you display the same pattern for a long time.

(7) If the Module keeps displaying the same pattern for a long period of time, the image may be "sticked" to the screen. To avoid image sticking, it is recommended to use a screen saver.

(8) Do not exceed the absolute maximum rating value. (supply voltage variation, input voltage variation, variation in part contents and environmental temperature, and so on) Otherwise the Module may be damaged.

(9) Dew drop atmosphere should be avoided.

(10) The storage room should be equipped with a good ventilation facility and avoid to expose to corrosive gas , which has a temperature controlling system.

(11) When expose to drastic fluctuation of temperature (hot to cold or cold to hot) ,the LCD may be affected; Specifically, drastic temperature fluctuation from cold to hot ,produces dew on the LCD's surface which may affect the operation of the polarizer and the LCD.

(12) Response time will be extremely delayed at lower temperature than the operating temperature range and on the other hand at higher temperature LCD may turn black at temperature above its operational range. However those phenomena do not mean malfunction or out of order with the LCD. The LCD will revert to normal operation once the temperature returns to the recommended temperature range for normal operation

11.8 Others

A. LC Leak

- If the liquid crystal material leaks from the panel, it is recommended to wash the LC with acetone or ethanol and then burn it.
- In case of contact with hands, skin or clothes, it has to be washed away thoroughly with soap.
- If LC in mouth, mouth need to be washed, drink plenty of water to induce vomiting and follow medical advice.
- If LC touch eyes, eyes need to be washed with running water at least 15 minutes.

B. Rework

- When returning the module for repair or etc., Please pack the module not to be broken. We recommend to use the original shipping packages.

SPEC. NUMBER S801-5126	SPEC TITLE GT080X0M-N12-1QP0 Product Specification	PAGE 27 OF 28
---------------------------	-------------------------------------------------------	------------------

BOE	PRODUCT GROUP	REV	ISSUE DATE
	TFT LCD PRODUCT	0	2020.08.31

12.0 Label

Drawing Of Marks

100±0.5

60±0.5

LCM Part No/模组型号:	20210803X030001-016
Customer Part No/客户料号:	
QTY 数量:	64 PCS
Production date/生产日期:	YY-MM-DD

图案说明:
模组型号: 20210803X030001-016
客户料号: 由客户提供
数量: 按实际包装数量打印
YY-MM-DD: 按照实际生产日期进行打印

备注: LCM模组拆包部分注意事项

1. 拆开纸箱, 拿出一包LCM模组, 撕掉封口处美纹胶后取出LCM模组

2. 撕取LCM模组表面保护膜: 拿住易撕膜手柄, 沿左上角与右下角的对角线方向撕取保护膜, 速度约5PCS/膜, 同时, 撕取时需用离子风机吹膜组表面, 风向沿撕取方向

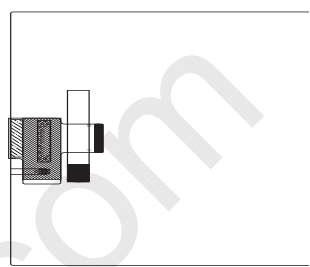
封箱胶纸

离子风机

易撕膜

美纹胶

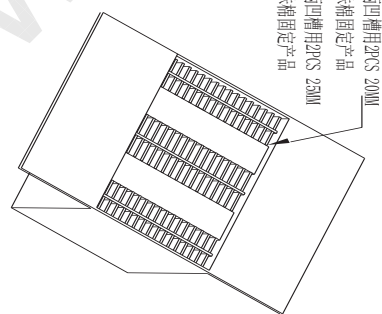
包材请回收!



两片产品屏对屏
中间防一层珍珠棉

二片产品装入一片
屏蔽袋

将2PCS产品放入纸板
一格里, 共计64pcs



使用封口胶封口
并贴附胶头